



**Noise Monitoring Result**

**Day Time (0700 - 1900hrs on normal weekdays)**

Location: M1a - Harbour Road Sports Centre

Date	Time	Weather	Measurement Noise Level			Baseline Level	Construction Noise Level	Limit Level
			Leq	L10	L90	Leq	Leq	Leq
Unit: dB(A), (30-min)								
28/3/2017	09:50	Fine	75.1	76.5	71.0	72	72	75
3/4/2017	14:42	Fine	74.5	75.5	70.9	72	71	75
11/4/2017	13:40	Cloudy	74.5	76.0	71.0	72	71	75
18/4/2017	10:00	Fine	73.6	75.5	70.0	72	68	75
24/4/2017	13:46	Cloudy	76.4	78.0	74.0	72	74	75

Location: M2b - Noon-day gun area

Date	Time	Weather	Measurement Noise Level			Baseline Level	Construction Noise Level	Limit Level
			Leq	L10	L90	Leq	Leq	Leq
Unit: dB(A), (30-min)								
28/3/2017	16:40	Fine	72.2	75.0	67.2	68	70	75
3/4/2017	13:46	Fine	74.9	78.5	67.5	68	74	75
11/4/2017	14:30	Cloudy	70.2	72.5	67.0	68	67	75
18/4/2017	10:45	Fine	71.8	74.5	67.0	68	70	75
24/4/2017	14:30	Fine	70.1	72.0	67.0	68	67	75

Location: M3a - Tung Lo Wan Fire Station

Date	Time	Weather	Measurement Noise Level			Baseline Level	Construction Noise Level	Limit Level
			Leq	L10	L90	Leq	Leq	Leq
Unit: dB(A), (30-min)								
28/3/2017	13:10	Fine	66.4	67.5	64.0	69	66	75
3/4/2017	13:05	Fine	66.5	67.5	64.5	69	67	75
11/4/2017	15:15	Cloudy	65.4	66.5	63.0	69	65	75
18/4/2017	11:30	Fine	66.9	68.0	64.5	69	67	75
24/4/2017	16:04	Cloudy	64.7	66.0	62.0	69	65	75

Location: M4b - Victoria Centre

Date	Time	Weather	Measurement Noise Level			Baseline Noise Level	Construction Noise Level	Limit Level
			Leq	L10	L90	Leq	Leq	Leq
Unit: dB(A), (30min)								
28/3/2017	13:55	Fine	64.2	65.5	62.0	67	64	75
3/4/2017	11:30	Fine	69.7	71.5	61.5	67	66	75
11/4/2017	15:50	Cloudy	66.4	67.5	63.5	67	66	75
18/4/2017	13:00	Fine	65.9	67.5	63.5	67	66	75
24/4/2017	15:15	Cloudy	71.7	74.0	65.0	67	70	75

Location: M5b - City Garden

Date	Time	Weather	Measurement Noise Level			Baseline Level	Construction Noise Level	Limit Level
			Leq	L10	L90	Leq	Leq	Leq
Unit: dB(A), (30min)								
28/3/2017	14:45	Fine	75.8	77.5	72.5	68	75	75
3/4/2017	10:58	Fine	69.4	70.0	66.0	68	64	75
10/4/2017	10:41	Cloudy	71.0	72.5	68.0	68	68	75
18/4/2017	13:50	Fine	78.4	80.0	74.0	68	78	75
28/4/2017	10:49	Cloudy	69.0	70.0	67.0	68	62	75

Location: M6 - HK Baptist Church Henrietta Secondary School

Date	Time	Weather	Measurement Noise Level			Baseline Level	Construction Noise Level	Limit Level
			Leq	L10	L90	Leq	Leq	Leq
Unit: dB(A), (30-min)								
28/3/2017	15:25	Fine	71.4	72.5	68.0	71	63	70
3/4/2017	09:45	Fine	70.1	71.0	67.0	71	70	65
10/4/2017	09:26	Cloudy	68.0	69.0	66.5	71	68	65
18/4/2017	15:00	Fine	70.0	76.0	67.0	71	70	70
26/4/2017	14:30	Cloudy	67.8	69.0	66.0	71	68	65



**Noise Monitoring Result**

**Day Time (0700 - 1900hrs on normal weekdays)**

Location: M7e - International Finance Centre (Eastern End of Podium) (Reference Station)

Date	Time	Weather	Measurement Noise Level			Baseline Level	Construction Noise Level	Limit Level
			Leq	L10	L90	Leq	Leq	Leq
Unit: dB(A), (30-min)								
27/3/2017	08:30	Fine	65.5	66.0	62.5	67	66	N/A
5/4/2017	14:29	Fine	66.1	67.5	62.5	67	66	N/A
11/4/2017	17:00	Cloudy	67.3	66.0	62.0	67	58	N/A
18/4/2017	16:30	Fine	75.6	78.5	64.5	67	75	N/A
24/4/2017	10:20	Cloudy	60.2	62.0	60.0	67	60	N/A

Location: M7w - International Finance Centre (Western End of Podium)

Date	Time	Weather	Measurement Noise Level			Baseline Level	Construction Noise Level	Limit Level
			Leq	L10	L90	Leq	Leq	Leq
Unit: dB(A), (30-min)								
27/3/2017	09:30	Fine	63.5	65.0	60.5	69	64	75
5/4/2017	13:53	Fine	65.9	67.5	63.0	69	66	75
11/4/2017	16:25	Cloudy	64.3	65.5	61.5	69	64	75
18/4/2017	15:58	Fine	64.7	66.0	62.0	69	65	75
24/4/2017	09:48	Cloudy	68.6	71.5	65.5	69	69	75

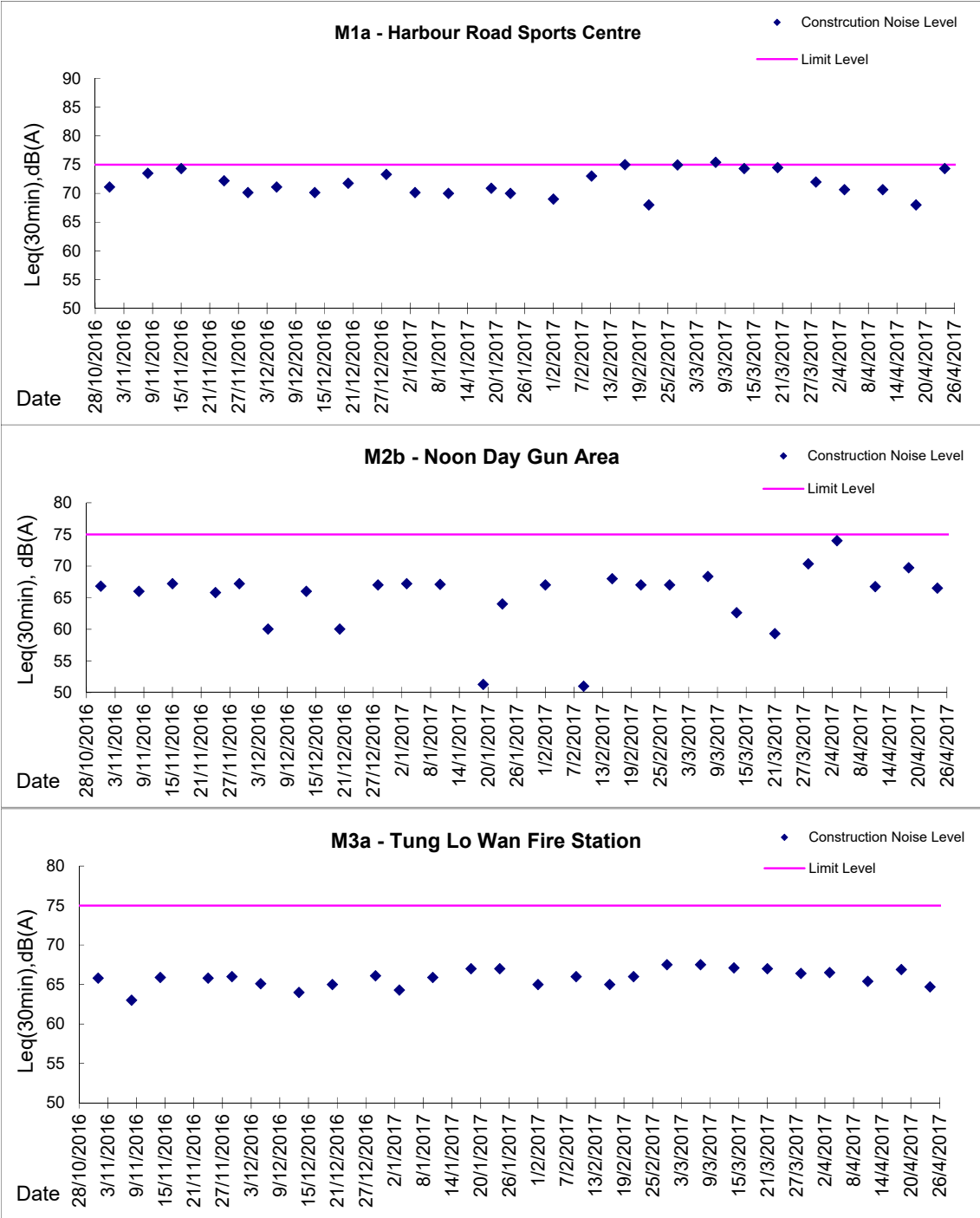
Location: M8 - City Hall

Date	Time	Weather	Measurement Noise Level			Baseline Level	Construction Noise Level	Limit Level
			Leq	L10	L90	Leq	Leq	Leq
Unit: dB(A), (30-min)								
27/3/2017	10:35	Fine	59.5	60.5	57.0	64	60	70
5/4/2017	15:15	Fine	64.7	67.5	63.1	64	56	70
11/4/2017	17:35	Cloudy	65.6	66.4	61.9	64	60	70
18/4/2017	17:08	Fine	65.8	68.3	60.9	64	61	70
24/4/2017	11:06	Cloudy	68.1	72.5	60.5	64	66	70



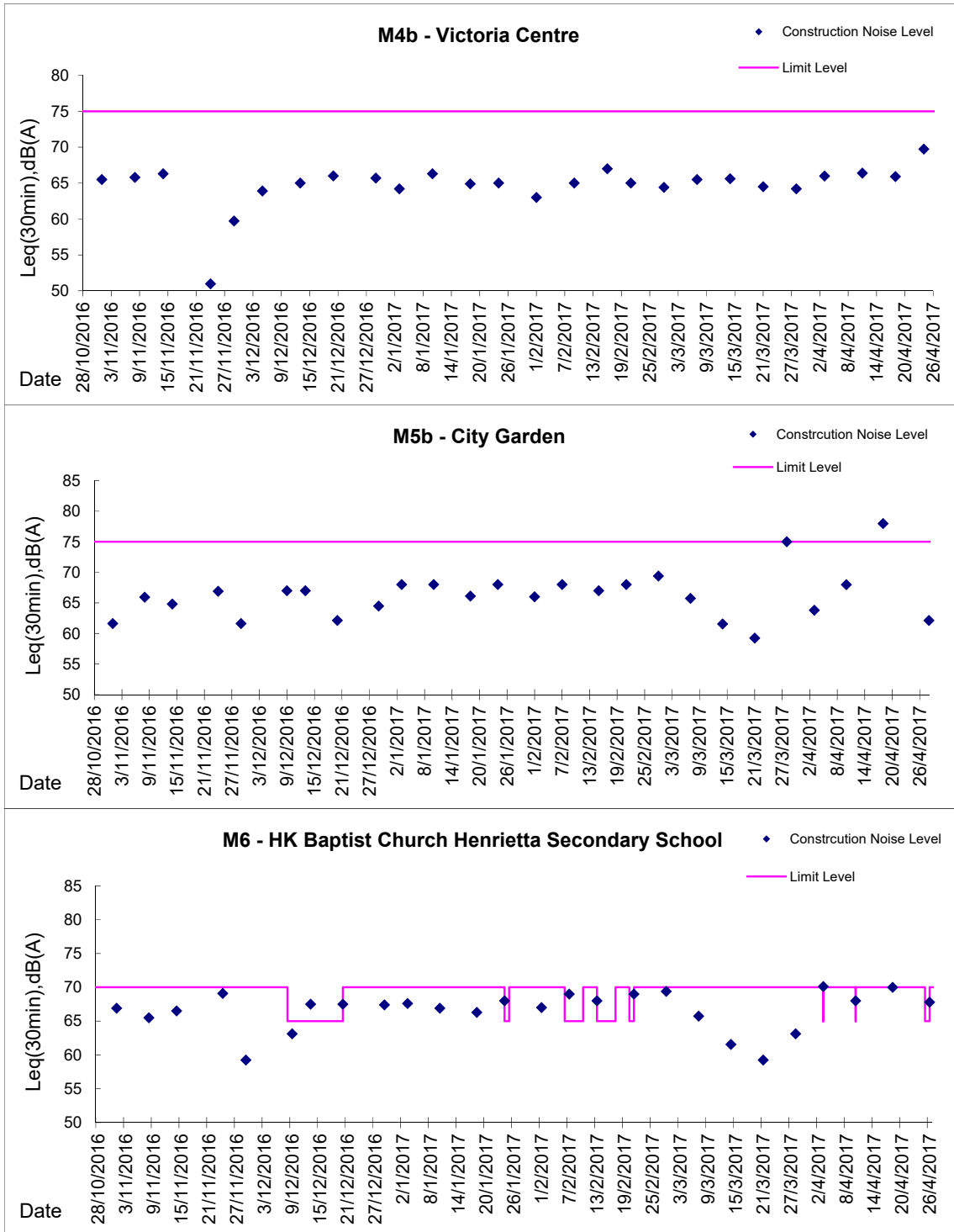
**Graphic Presentation of Noise Monitoring Result**

**Day Time (0700 - 1900hrs on normal weekdays)**



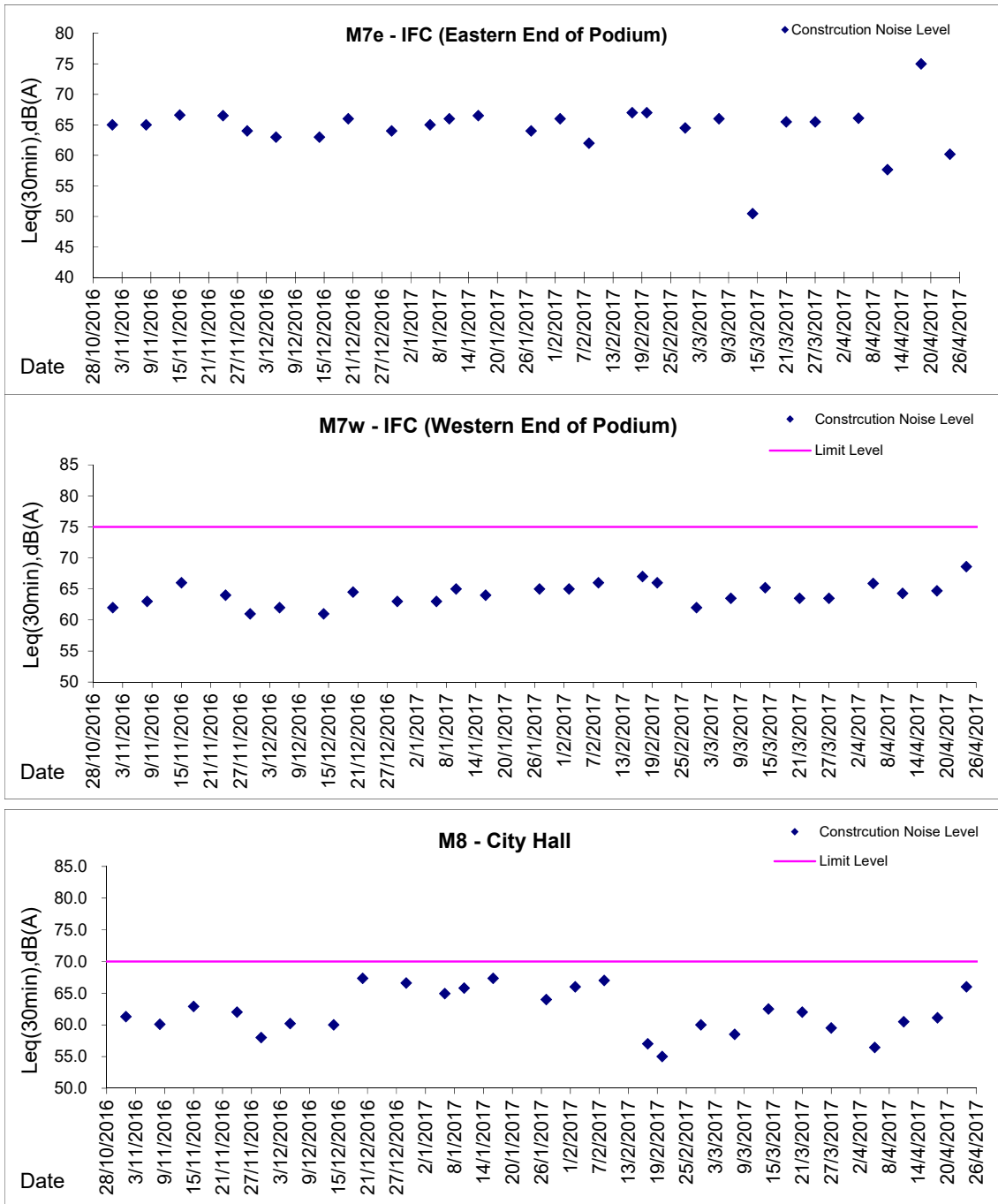
**Graphic Presentation of Noise Monitoring Result**

Day Time (0700 - 1900hrs on normal weekdays)



**Graphic Presentation of Noise Monitoring Result**

**Day Time (0700 - 1900hrs on normal weekdays)**



\* Remark: M7e - IFC (Eastern End of Podium) is a reference monitoring station