



**Water Monitoring Result at M5B - Central Cooling Water Intake Group
Mid-Flood Tide**

Date	Time	Weather Condition	Sampling Depth		Water Temperature		pH		Salinity		DO Saturation		DO		Turbidity		Suspended Solids							
					°C		-		ppt		%		mg/L		NTU		mg/L							
			m	Value	Average	Value	Average	Value	Average	Value	Average	Value	Average	Value	Average	Value	Average	Value	Average					
01/03/2019	13:35	Cloudy	Middle	4.0	20.40	20.40	20.50	7.88	7.88	7.89	32.95	32.95	32.94	107.2	106.9	106.8	7.94	7.93	7.92	1.53	1.50	1.50	2	2.00
	13:37		Middle	4.0	20.60	20.60		7.90	7.90		32.93	32.92		106.2	107.0		7.89	7.93		1.48	1.47		<2	
04/03/2019	17:20	Cloudy	Middle	4.0	21.30	21.30	21.35	7.89	7.89	7.90	31.31	31.31	31.33	104.8	104.8	105.2	7.69	7.69	7.72	3.08	3.06	3.06	4	4.50
	17:22		Middle	4.0	21.40	21.40		7.90	7.90		31.34	31.34		105.4	105.6		7.74	7.75		3.05	3.05		5	
06/03/2019	16:35	Cloudy	Middle	4.0	20.40	20.40	20.40	7.72	7.72	7.74	32.39	32.39	32.39	96.8	96.7	96.3	7.21	7.21	7.18	2.24	2.24	2.25	4	4.00
	16:37		Middle	4.0	20.40	20.40		7.75	7.75		32.38	32.38		95.5	96.3		7.12	7.18		2.25	2.26		4	
08/03/2019	20:08	Cloudy	Middle	3.0	18.70	18.70	18.70	8.49	8.49	8.49	31.46	31.46	31.46	90.2	91.2	91.2	6.98	7.08	7.06	3.74	3.69	3.74	<2	2.00
	20:09		Middle	3.0	18.70	18.70		8.49	8.49		31.46	31.46		91.5	91.7		7.09	7.10		3.76	3.78		2	
11/03/2019	09:55	Cloudy	Middle	4.0	18.90	18.90	18.90	7.07	7.07	7.07	32.49	32.49	32.49	101.7	101.4	101.2	7.79	7.77	7.76	1.79	1.78	1.79	7	6.50
	09:57		Middle	4.0	18.90	18.90		7.07	7.07		32.49	32.49		100.9	100.9		7.73	7.73		1.79	1.79		6	
13/03/2019	08:40	Fine	Middle	4.0	19.70	19.70	19.75	7.25	7.25	7.27	32.70	32.70	32.70	97.9	98.2	98.1	7.37	7.39	7.38	3.56	3.53	3.57	9	9.50
	08:42		Middle	4.0	19.80	19.80		7.28	7.28		32.70	32.70		98.2	98.0		7.38	7.37		3.59	3.60		10	
15/03/2019	11:00	Cloudy	Middle	4.0	20.10	20.10	20.10	7.37	7.37	7.39	32.74	32.74	32.74	96.9	96.3	96.2	7.25	7.20	7.20	1.88	1.86	1.87	<2	<2
	11:02		Middle	4.0	20.10	20.10		7.40	7.40		32.73	32.73		95.5	96.2		7.14	7.20		1.86	1.87		<2	
18/03/2019	13:55	Fine	Middle	4.0	22.40	22.40	22.45	7.35	7.35	7.35	33.57	33.57	33.57	100.0	100.0	99.4	7.13	7.13	7.08	2.70	2.70	2.66	6	6.00
	13:57		Middle	4.0	22.50	22.50		7.35	7.35		33.56	33.56		98.9	98.8		7.02	7.04		2.62	2.62		6	
20/03/2019	16:05	Fine	Middle	4.0	22.60	22.60	22.65	7.79	7.79	7.80	32.94	32.94	32.95	93.5	94.1	94.1	6.67	6.69	6.70	3.38	3.40	3.39	6	6.00
	16:07		Middle	4.0	22.70	22.70		7.81	7.81		32.95	32.95		94.3	94.4		6.72	6.73		3.40	3.39		6	
22/03/2019	18:45	Cloudy	Middle	3.5	23.60	23.60	23.60	8.20	8.20	8.20	30.94	30.94	30.94	81.0	80.7	80.9	5.75	5.73	5.74	6.25	6.05	6.10	3	3.50
	18:40		Middle	3.5	23.60	23.60		8.20	8.20		30.94	30.94		80.9	81.1		5.74	5.75		6.09	6.00		4	
25/03/2019	08:15	Cloudy	Middle	4.0	20.50	20.50	20.50	7.35	7.35	7.35	33.09	33.09	33.10	92.4	92.8	92.3	6.85	6.88	6.85	6.21	6.21	6.21	10	9.50
	08:17		Middle	4.0	20.50	20.50		7.35	7.35		33.10	33.10		92.0	92.1		6.83	6.83		6.21	6.20		9	
27/03/2019	11:10	Fine	Middle	4.0	22.00	22.00	22.05	7.55	7.55	7.56	33.25	33.25	33.25	95.2	95.7	95.2	6.85	6.87	6.85	5.30	5.30	5.31	5	5.00
	11:12		Middle	4.0	22.10	22.10		7.56	7.56		33.24	33.24		94.9	94.9		6.84	6.84		5.31	5.32		5	
30/03/2019	07:50	Fine	Middle	4.0	22.50	22.50	22.55	7.62	7.62	7.64	32.92	32.92	32.92	95.7	95.8	95.6	6.84	6.84	6.83	6.81	6.82	6.82	9	8.50
	07:52		Middle	4.0	22.60	22.60		7.66	7.66		32.91	32.91		95.4	95.3		6.81	6.81		6.82	6.81		8	

Remarks:
Single underline denotes exceedance over Action Level.
Double underline denotes exceedance over Limit Level.



**Water Monitoring Result at Culvert J - Reference Station
Mid-Flood Tide**

Date	Time	Weather Condition	Sampling Depth		Water Temperature		pH		Salinity		DO Saturation		DO		Turbidity		Suspended Solids							
					°C		-		ppt		%		mg/L		NTU		mg/L							
			m	Value	Average	Value	Average	Value	Average	Value	Average	Value	Average	Value	Average	Value	Average	Value	Average					
01/03/2019	13:30	Cloudy	Middle	3.5	21.10	21.10	21.05	7.64	7.64	7.68	32.80	32.80	32.82	114.4	113.2	112.1	8.42	8.32	8.25	1.70	1.70	1.71	<2	<2
	13:32		Middle	3.5	21.00	21.00		7.72	7.72		32.84	32.84		110.7	110.2		8.14	8.11		1.71	1.72		<2	
04/03/2019	17:15	Cloudy	Middle	3.5	21.20	21.20	21.20	7.85	7.85	7.86	31.27	31.27	31.28	103.1	104.0	103.4	7.77	7.69	7.68	3.37	3.38	3.33	3	3.50
	17:17		Middle	3.5	21.20	21.20		7.86	7.86		31.28	31.28		103.3	103.0		7.63	7.61		3.26	3.29		4	
06/03/2019	16:30	Cloudy	Middle	3.5	20.60	20.60	20.60	7.49	7.49	7.51	29.31	29.31	29.31	98.0	98.0	98.0	7.47	7.41	7.43	8.55	8.62	8.62	12	12.50
	16:32		Middle	3.5	20.60	20.60		7.52	7.52		29.30	29.30		98.0	98.1		7.41	7.42		8.65	8.64		13	
08/03/2019	20:27	Cloudy	Middle	2.5	18.70	18.70	18.70	8.54	8.54	8.54	29.05	29.05	29.05	88.7	88.8	88.3	6.96	6.98	6.94	7.35	7.30	7.35	3	3.00
	20:28		Middle	2.5	18.70	18.70		8.54	8.54		29.05	29.05		88.0	87.7		6.92	6.89		7.48	7.25		3	
11/03/2019	09:50	Cloudy	Middle	3.5	19.00	19.00	19.00	7.03	7.03	7.05	32.43	32.43	32.43	98.2	98.1	97.6	7.52	7.51	7.47	1.78	1.78	1.78	6	6.50
	09:52		Middle	3.5	19.00	19.00		7.06	7.06		32.43	32.43		97.1	97.0		7.43	7.42		1.78	1.78		7	
13/03/2019	08:35	Fine	Middle	3.5	20.20	20.20	20.20	7.19	7.19	7.19	31.14	31.14	31.14	98.2	97.8	97.4	7.40	7.37	7.34	3.69	3.70	3.69	7	6.50
	08:37		Middle	3.5	20.20	20.20		7.19	7.19		31.14	31.14		96.5	96.9		7.27	7.30		3.68	3.69		6	
15/03/2019	10:55	Cloudy	Middle	3.5	20.10	20.10	20.10	7.26	7.26	7.30	29.64	29.64	29.64	95.3	95.1	94.1	7.25	7.24	7.16	3.93	3.99	3.98	3	3.00
	10:57		Middle	3.5	20.10	20.10		7.33	7.33		29.64	29.64		93.0	93.0		7.08	7.08		4.00	4.00		<2	
18/03/2019	13:50	Fine	Middle	3.5	22.70	22.70	22.85	7.26	7.26	7.27	31.41	31.41	31.41	98.4	97.5	96.9	7.05	6.98	6.93	3.15	3.17	3.12	6	5.50
	13:52		Middle	3.5	23.00	23.00		7.28	7.28		31.41	31.41		95.8	95.8		6.86	6.84		3.08	3.09		5	
20/03/2019	16:00	Fine	Middle	3.5	23.10	23.10	23.20	7.73	7.73	7.73	31.76	31.76	31.76	93.9	93.8	93.2	6.67	6.66	6.62	3.31	3.29	3.29	5	4.50
	16:02		Middle	3.5	23.30	23.30		7.73	7.73		31.76	31.76		92.7	92.4		6.58	6.58		3.28	3.27		4	
22/03/2019	18:57	Cloudy	Middle	3.0	23.40	23.40	23.40	8.24	8.24	8.24	30.90	30.90	30.90	82.1	82.3	63.9	5.85	5.85	5.87	5.04	5.02	5.05	7	6.50
	18:58		Middle	3.0	23.40	23.40		8.24	8.24		30.90	30.90		8.2	83.0		5.87	5.90		5.00	5.13		6	
25/03/2019	08:10	Cloudy	Middle	3.5	20.60	20.60	20.60	7.19	7.19	7.19	32.90	32.90	32.91	98.9	98.7	97.4	7.32	7.31	7.21	7.34	7.36	7.36	9	9.50
	08:12		Middle	3.5	20.60	20.60		7.19	7.19		32.91	32.91		95.7	96.1		7.09	7.12		7.37	7.38		10	
27/03/2019	11:05	Fine	Middle	3.5	22.40	22.40	22.50	7.47	7.47	7.48	33.14	33.14	33.14	102.3	101.8	101.0	7.30	7.27	7.20	4.58	4.60	4.62	4	4.00
	11:07		Middle	3.5	22.60	22.60		7.49	7.49		33.13	33.13		100.0	99.8		7.12	7.10		4.68	4.63		4	
30/03/2019	07:45	Fine	Middle	3.5	22.90	22.90	22.95	7.46	7.46	7.51	31.38	31.38	31.38	98.4	97.8	97.4	7.04	7.00	6.97	4.47	4.47	4.48	2	2.00
	07:47		Middle	3.5	23.00	23.00		7.56	7.56		31.38	31.38		96.7	96.5		6.92	6.90		4.48	4.48		2	

Remarks:
Single underline denotes exceedance over Action Level.
Double underline denotes exceedance over Limit Level.



**Water Monitoring Result at M5B - Central Colling Water Intake Group
Mid-Ebb Tide**

Date	Time	Weather Condition	Sampling Depth		Water Temperature			pH			Salinity		DO Saturation		DO		Turbidity		Suspended Solids					
					°C			-			ppt		%		mg/L		NTU		mg/L					
			m	Value	Average	Value	Average	Value	Average	Value	Average	Value	Average	Value	Average	Value	Average	Value	Average	Value	Average			
01/03/2019	22:14	Cloudy	Middle	3.5	20.20	20.20	20.20	8.31	8.31	8.31	31.82	31.82	31.82	91.1	90.3	90.9	6.84	6.78	6.82	2.47	2.49	2.48	<2	<2
	22:20		Middle	3.5	20.20	20.20		8.31	8.31		31.82	31.82		91.2	91.0		6.84	6.83		2.52	2.43		<2	
04/03/2019	23:15	Cloudy	Middle	3.5	19.80	19.80	19.80	8.30	8.30	8.30	30.44	30.44	30.44	83.8	84.4	84.8	6.39	6.44	6.47	4.49	4.14	4.32	4	4.50
	23:16		Middle	3.5	19.80	19.80		8.30	8.30		30.44	30.44		85.4	85.4		6.52	6.52		4.27	4.38		5	
06/03/2019	-	Amber Rainstorm Warning Signal	Middle	-	-	-	-	-	-	-	-	-	-	-	-	-	-	-	-	-	-	-	-	-
	-		Middle	-	-	-		-	-		-	-		-	-		-	-		-	-		-	
08/03/2019	14:30	Cloudy	Middle	4.0	19.00	19.00	19.00	7.22	7.22	7.22	32.62	32.62	32.62	101.5	102.5	102.2	7.77	7.84	7.82	1.93	1.97	1.97	<2	<2
	14:32		Middle	4.0	19.00	19.00		7.23	7.22		32.62	32.62		102.3	102.4		7.83	7.84		1.99	2.00		<2	
11/03/2019	13:50	Fine	Middle	4.0	20.60	20.60	20.65	7.17	7.17	7.18	32.84	32.84	32.84	98.2	98.7	98.5	7.27	7.30	7.28	2.94	2.90	2.91	4	3.50
	13:52		Middle	4.0	20.70	20.70		7.19	7.19		32.84	32.84		98.3	98.6		7.26	7.29		2.91	2.90		3	
13/03/2019	14:05	Fine	Middle	4.0	21.30	21.30	21.40	7.31	7.31	7.33	32.73	32.73	32.73	93.6	94.8	94.4	6.83	6.91	6.88	2.41	2.47	2.46	7	7.00
	14:07		Middle	4.0	21.50	21.50		7.34	7.34		32.73	32.73		94.3	94.7		6.87	6.90		2.48	2.48		7	
15/03/2019	20:16	Cloudy	Middle	3.0	19.80	19.80	19.80	8.35	8.35	8.35	32.28	32.28	32.28	86.7	87.4	87.5	6.54	6.60	6.60	2.74	2.72	2.71	<2	<2
	20:17		Middle	3.0	19.80	19.80		8.35	8.35		32.28	32.28		87.5	88.2		6.61	6.66		2.70	2.68		<2	
18/03/2019	20:15	Cloudy	Middle	3.5	21.20	21.20	21.20	8.13	8.13	8.13	32.59	32.59	32.59	83.7	83.3	83.5	6.14	6.10	6.12	2.36	2.15	2.24	4	4.00
	20:16		Middle	3.5	21.20	21.20		8.13	8.13		32.59	32.59		83.4	83.4		6.12	6.12		2.20	2.23		4	
20/03/2019	14:05	Cloudy	Middle	3.5	22.30	22.30	22.40	7.61	7.61	7.64	32.88	32.88	32.89	93.4	93.0	93.2	6.70	6.67	6.68	2.90	2.82	2.87	3	3.50
	14:07		Middle	3.5	22.50	22.50		7.66	7.66		32.89	32.89		93.0	93.4		6.67	6.68		2.87	2.88		4	
22/03/2019	12:05	Cloudy	Middle	4.0	22.60	22.60	22.70	7.49	7.49	7.51	32.27	32.27	32.27	96.1	96.2	95.6	6.88	6.88	6.83	4.29	4.29	4.24	4	4.50
	12:07		Middle	4.0	22.80	22.80		7.52	7.53		32.27	32.27		94.6	95.3		6.76	6.80		4.19	4.20		5	
25/03/2019	16:05	Fine	Middle	3.5	22.10	22.10	22.15	7.54	7.54	7.55	33.51	33.51	33.51	105.4	104.8	104.3	7.56	7.52	7.47	4.33	4.32	4.30	6	6.00
	16:07		Middle	3.5	22.20	22.20		7.55	7.55		33.51	33.51		103.6	103.2		7.41	7.39		4.27	4.29		6	
27/03/2019	18:10	Fine	Middle	3.5	22.30	22.30	22.40	7.62	7.62	7.62	33.41	33.41	33.41	94.6	94.7	94.2	6.75	6.76	6.72	3.45	3.47	3.46	2	2.00
	18:12		Middle	3.5	22.50	22.50		7.62	7.62		33.41	33.41		93.6	93.8		6.68	6.69		3.46	3.45		2	
29/03/2019	05:27	Cloudy	Middle	3.5	22.60	22.60	22.60	8.23	8.23	8.23	30.42	30.42	30.42	80.1	79.1	79.4	5.80	5.73	5.75	2.44	2.55	2.52	<2	<2
	05:28		Middle	3.5	22.60	22.60		8.23	8.23		30.42	30.42		78.9	79.3		5.72	5.74		2.49	2.60		<2	

Remarks:
Single underline denotes exceedance over Action Level.
Double underline denotes exceedance over Limit Level.



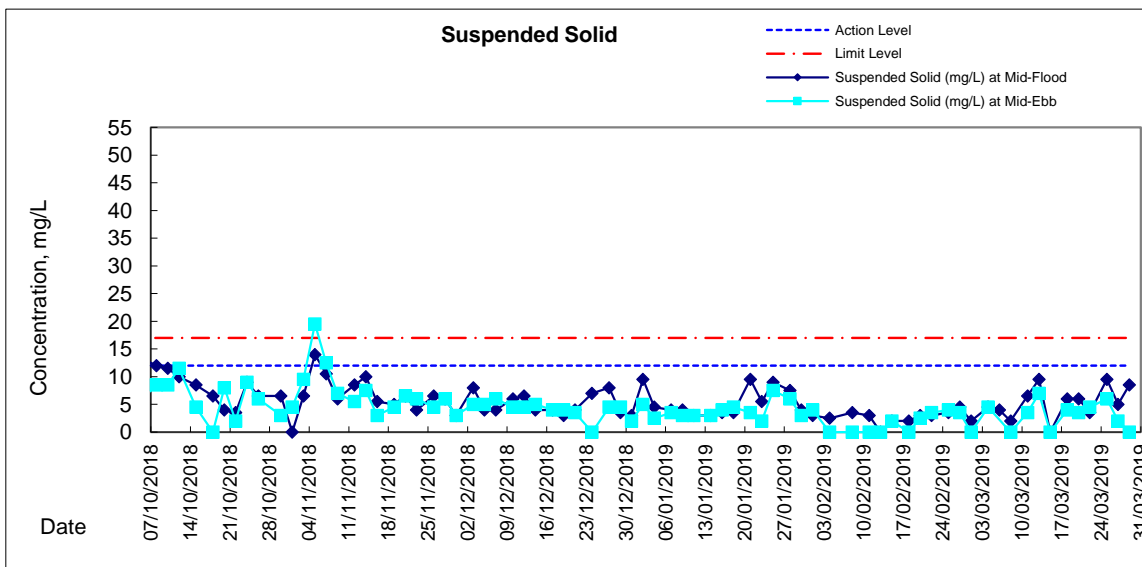
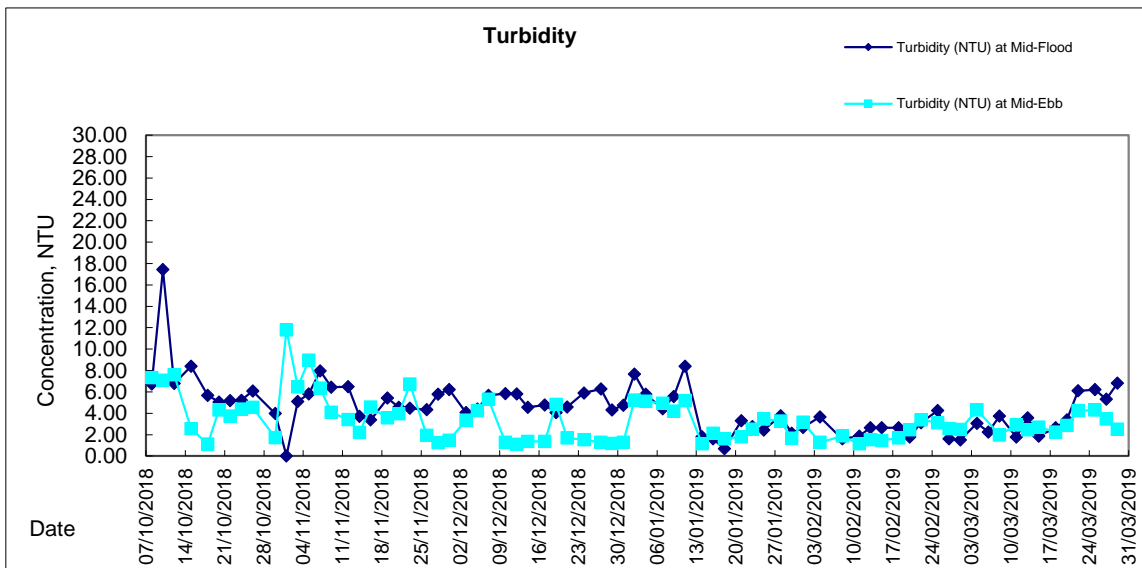
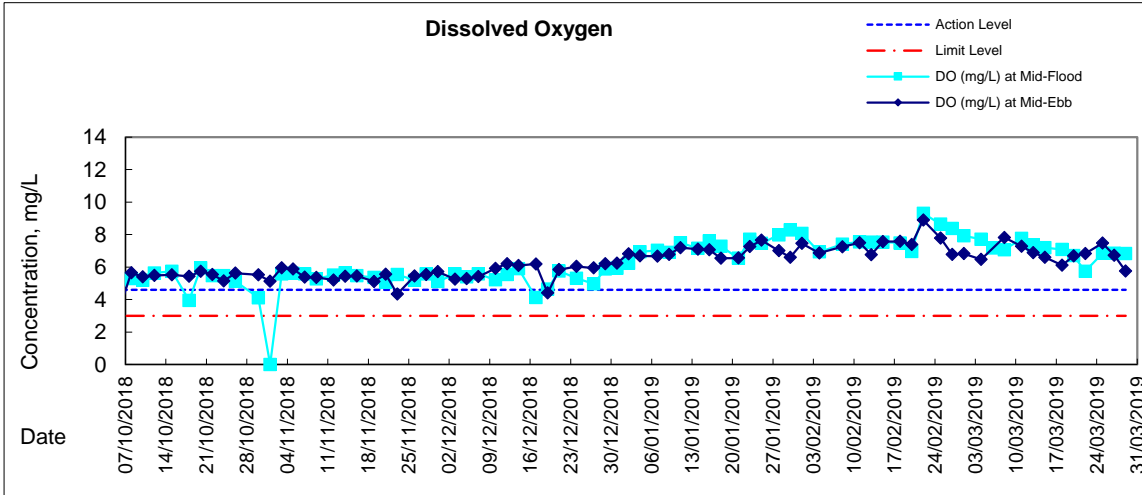
**Water Monitoring Result at Culvert J - Reference Station
Mid-Ebb Tide**

Date	Time	Weather Condition	Sampling Depth		Water Temperature			pH			Salinity		DO Saturation		DO		Turbidity		Suspended Solids					
					°C			-			ppt		%		mg/L		NTU		mg/L					
					Value	Average		Value	Average		Value	Average	Value	Average	Value	Average	Value	Average	Value	Average				
01/03/2019	22:27	Cloudy	Middle	3	20.30	20.30	20.30	8.37	8.37	8.37	27.67	27.67	28.17	85.0	84.9	85.5	6.53	6.52	6.56	5.36	5.21	5.40	4	4.50
	22:28		Middle	3	20.30	20.30		8.37	8.37		27.67	29.67		86.0	85.9		6.60	6.60		5.47	5.54		5	
04/03/2019	23:24	Cloudy	Middle	3	19.70	19.70	19.70	8.42	8.42	8.42	23.75	23.75	23.75	86.5	86.0	86.8	6.88	6.84	6.90	23.12	22.95	23.02	46	47.00
	23:25		Middle	3	19.70	19.70		8.42	8.42		23.75	23.75		86.6	87.9		6.88	6.99		23.08	22.93		48	
06/03/2019	-	Amber Rainstorm Warning Signal	Middle	-	-	-	-	-	-	-	-	-	-	-	-	-	-	-	-	-	-	-	-	-
	-		Middle	-	-	-		-	-		-	-		-	-		-	-		-	-		-	
08/03/2019	14:25	Cloudy	Middle	4	19.00	19.00	19.00	7.16	7.16	7.18	32.58	32.58	33.08	103.5	103.5	103.0	7.92	7.92	7.88	1.79	1.78	1.78	<2	<2
	14:27		Middle	4	19.00	19.00		7.19	7.19		33.58	33.58		103.0	102.0		7.89	7.80		1.78	1.78		<2	
11/03/2019	13:45	Fine	Middle	4	21.10	21.10	21.15	7.12	7.12	7.14	32.81	32.81	32.82	95.5	95.4	94.9	7.00	6.99	6.96	2.75	2.75	2.74	4	4.50
	13:47		Middle	4	21.20	21.20		7.15	7.15		32.83	32.83		94.2	94.4		6.91	6.92		2.75	2.72		5	
13/03/2019	14:00	Fine	Middle	4	22.30	22.30	22.45	7.32	7.32	7.32	30.17	30.17	30.17	91.3	90.4	90.7	6.65	6.50	6.58	4.38	4.47	4.43	9	9.50
	14:02		Middle	4	22.60	22.60		7.32	7.32		30.16	30.16		90.5	90.6		6.58	6.58		4.46	4.41		10	
15/03/2019	20:25	Cloudy	Middle	3	19.90	19.90	19.90	8.39	8.39	8.39	27.94	27.94	27.94	79.3	79.1	79.1	6.13	6.12	6.12	8.02	8.05	7.98	6	5.50
	20:26		Middle	3	19.90	19.90		8.39	8.39		27.94	27.94		79.0	79.0		6.11	6.11		7.93	7.90		5	
18/03/2019	20:23	Cloudy	Middle	3	21.20	21.20	21.20	8.20	8.20	8.20	30.80	30.80	30.80	81.5	81.3	81.0	6.04	6.02	6.01	2.75	2.71	2.70	5	4.50
	20:24		Middle	3	21.20	21.20		8.20	8.20		30.80	30.80		81.2	80.1		6.02	5.94		2.69	2.66		4	
20/03/2019	14:00	Cloudy	Middle	4	22.80	22.80	22.85	7.58	7.58	7.59	29.28	29.28	29.27	90.3	90.0	89.4	6.54	6.52	6.47	5.19	5.16	5.17	5	4.50
	14:02		Middle	4	22.90	22.90		7.59	7.59		29.26	29.26		88.6	88.5		6.40	6.40		5.17	5.17		4	
22/03/2019	12:00	Cloudy	Middle	4	23.40	23.40	23.55	7.14	7.14	7.17	31.43	31.43	31.42	96.9	96.0	95.2	6.86	6.80	6.74	4.27	4.18	4.23	2	2.50
	12:02		Middle	4	23.70	23.70		7.19	7.19		31.40	31.40		94.1	93.8		6.65	6.63		4.19	4.26		3	
25/03/2019	16:00	Fine	Middle	4	21.70	21.70	21.75	7.58	7.58	7.59	32.92	32.92	32.92	92.9	92.9	92.5	6.73	6.73	6.70	6.17	6.17	6.17	8	7.50
	16:02		Middle	4	21.80	21.80		7.59	7.59		32.92	32.92		92.2	92.1		6.67	6.67		6.16	6.17		7	
27/03/2019	18:05	Fine	Middle	4	23.10	23.10	23.25	7.58	7.58	7.59	33.44	33.44	33.45	99.6	99.7	98.5	7.01	7.01	6.92	3.29	3.29	3.28	<2	<2
	18:07		Middle	4	23.40	23.40		7.59	7.59		33.45	33.45		97.7	97.0		6.85	6.79		3.26	3.27		<2	
29/03/2019	05:36	Cloudy	Middle	3	22.70	22.70	22.70	8.28	8.28	8.28	26.94	26.94	26.94	77.9	78.0	78.5	5.76	5.77	5.81	3.11	3.14	3.14	<2	<2
	05:37		Middle	3	22.70	22.70		8.28	8.28		26.94	26.94		78.8	79.4		5.82	5.87		3.15	3.17		<2	

Remarks:
Single underline denotes exceedance over Action Level.
Double underline denotes exceedance over Limit Level.



Graphic Presentation of Water Quality Result of M5B - Central Cooling Water Intake Groups





Graphic Presentation of Water Quality Result of Culvert J - Reference Station

